

The VisiConsult InSpect is a compact X-ray inspection cabinet for all types of applications.



VisiConsult
X-ray Systems & Solutions

InSpect Small footprint X-ray inspection device

Small footprint and compact design

Available for film, CR or DR inspection

Microfocus or Minifocus X-ray tube

Intuitive and simple touch operation

Modular setup and automation options



InSpect - technical specification

| | |
|-------------------------------------|----------------------|
| Outer dimensions (H x W x D) | 1080 x 640 x 565 mm |
| Inner dimensions (H x W x D) | 580 x 480 x 470 mm |
| Weight | 240 kg |
| Electrical connection | 230V, 50/60Hz, 200VA |
| Focus Detector Distance FDD | Ca. 600 mm |
| Focus Object Distance FOD | Ca. 50 – 600 mm |
| Magnification | 1 – 12 x |

Microfocus version

| | |
|-------------------|-------------|
| Energy | 40 – 130 kV |
| Current | 0 – 300 µA |
| Focal spot | 5 – 40 µm |

Minifocus version

| | |
|-------------------|------------|
| Energy | 40 – 90 kV |
| Current | 0 – 6 mA |
| Focal spot | 1 mm |

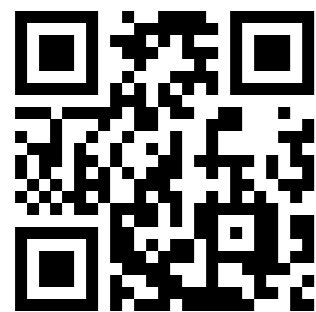
Digital radiography upgrade

| | |
|--------------------|--------------|
| Frame rate | 4 fps |
| Resolution | 140 µm |
| Active area | 350 x 350 mm |
| Bit depth | 16 bit |

Dimensions and electrical values can vary depending on X-ray equipment. Cabinet in compliance to German and international radiation law. Dimensions can be customized in case of special requirements, especially in terms of part size.



Your VisiConsult Sales Team!



VisiConsult is a family owned company located in Northern Germany and is a specialist for customized and standard X-ray systems. All our products are developed and produced locally and delivered as turn-key solutions. This leads to cutting edge performance and a high flexibility. Our goal is to solve our customers' problems with tailored systems and guarantee a premium post-sales service.

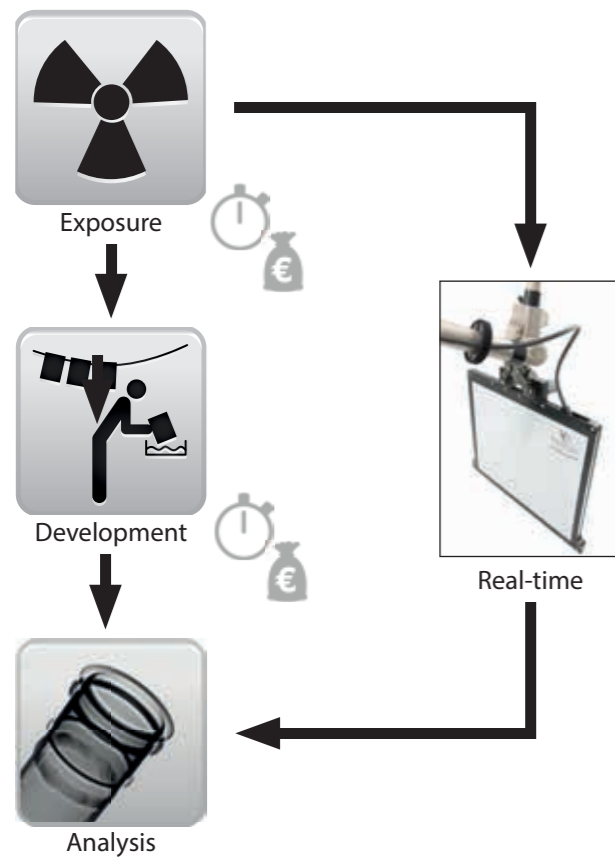
More than 25 years of expertise in security and classic non-destructive testing (NDT) markets like aerospace, automotive and many more lead to an unmatched experience in X-ray technology and result in a superior global service network.

InSpect – The compact and versatile cabinet

The InSpect is perfectly suitable for laboratories, dentists, forensic institutes and educational bodies, but can also be used in the industrial environment to inspect electronics, castings or other parts. The system is available with various hardware configurations depending on the inspection task. In order to ensure an easy inspection, the system can be operated as a stand-alone device through the high-resolution touch panel and a simplified *Xplus* software.



Film Radiography Digital Radiography

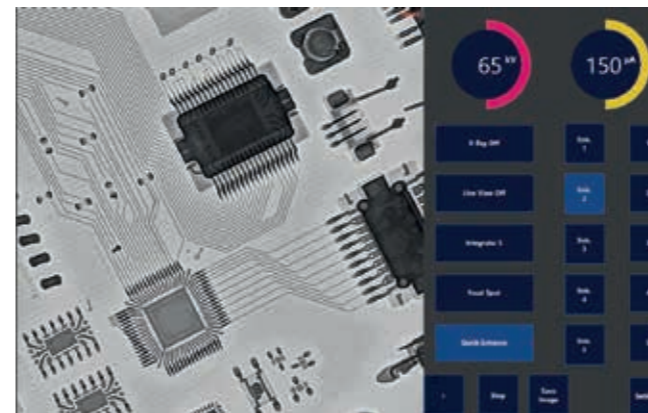
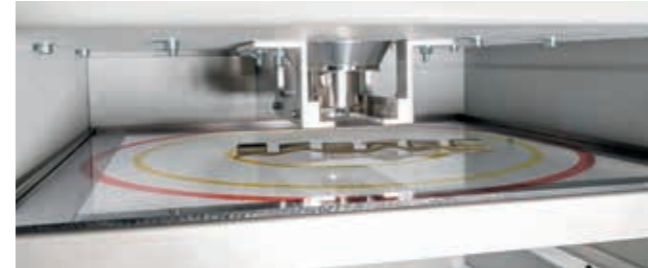


Intuitive operation principle

To ensure fast and easy part placement the cabinet has a number of guiding rails on different heights. The special tray plate is made of low density material to keep X-ray interference to a minimum. Depending on the desired magnification the tray can be inserted to the rails. This allows the operator to quickly modify the geometric magnification. A higher magnification results in a smaller field of view, but also increases the image accuracy. Special part holders can be built by the operator depending on the requirements. The special cabinet design allows versatile usage for many different applications and part sizes in a single system.

Optional automations

If the cabinet shall be integrated into a production line, VisiConsult offers an automation upgrade. This allows conveyor belts to run through the cabinet body to perform automated (ADR) in-line inspection. Such solutions are always customized towards the specific application.



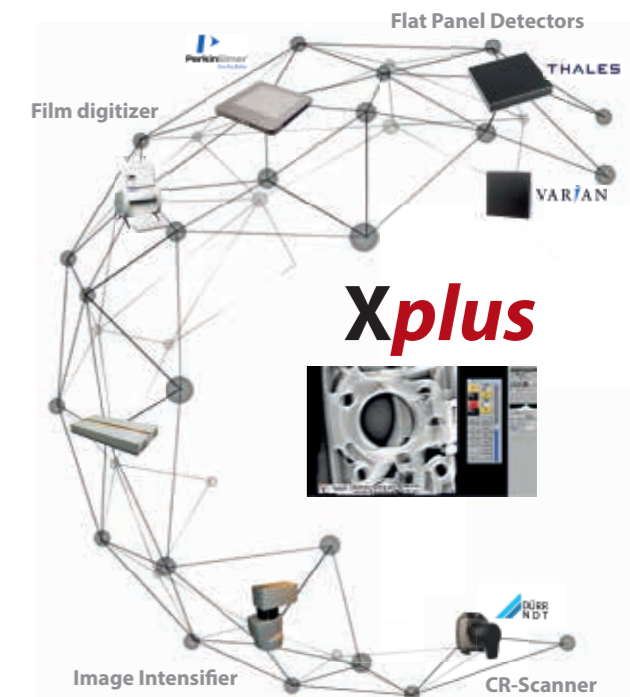
Modular design and high quality

To provide the best inspection results VisiConsult supplies a broad variety of X-ray components. The tube and detector can be freely combined depending on customer preferences or application requirements, which are determined through complex case studies. For a maximum safety the cabinet is certified by the German TÜV and CE to ensure no X-ray leakage and the fulfillment of all related standards. The robust industrial design, developed and produced in Germany, guarantees a long lifetime and low downtimes even under demanding conditions. The inspection results can be reviewed at the system, in an operator cabinet or through offline-stations.

Xplus – Discover the invisible

The core of the system is our in-house developed image enhancement system *Xplus* that sets new industry standards. Constant development and 25 years of experience combined with a maximum flexibility towards special process requirements help our customers to be a step ahead. Advanced features like overlay tools, macro generators, filter builders, live image enhancement, report toolkits, DICOM integration, measurement tools and many more make the *Xplus* the most sophisticated software on the market.

To allow simple and fast operation the InSpect runs a light *Xplus* version for image acquisition, processing, archiving and simple inspection. It is fully touch operated and very intuitive. More complex operations can be performed on an offline review station.



The InSpect cabinet is equipped with a high resolution touch panel for fast and intuitive operation. All main functions of the system like energy, current and exposure time can be set within seconds. Commonly used parameters can be easily stored.

In case the real-time module with a digital radiography detector (DDA) is installed the user can directly display an image preview on the panel and perform basic image enhancement.



Depending on the application and inspected specimens the InSpect cabinet can be equipped with a Microfocus or Minifocus tube. The VisiConsult application team will suggest the right choice depending on a customer specific case study.

The Microfocus tube allows high magnification for the inspection of even delicate structures like electronic components or organic materials. The Microfocus tube has more power to penetrate also materials with higher density like aluminum castings or other metal objects.